

CRAFT

VOL.27
2022

YIZUMI Customer Magazine

P03 Latest News

Enhance the Development and Innovation of New Products to Accelerate Globalization

P13 New Products

YIZUMI 8500-ton Injection Molding Machine, New Record of Ultra-large High Precision Injection Molding Machine in China

P23 K Show 2022

YIZUMI is ready for the global feast of the plastics and rubber industry

P25 Exploration in Medical industry

Here It Comes! Integrated Solution for COVID-19 Self-test Kits

YIZUMI Yi⁺ Future Intelligent E-power Greener Yi⁺ future

Eco-friendly **E**nergy saving **E**asy-used **E**fficiency **E**conomic



YIZUMI IMM booth: **Hall 13C77**
YIZUMI RIM booth: **Hall 14C59**





P03 Latest News

Enhance the Development and Innovation of New Products to Accelerate Globalization



P13 New Products

YIZUMI 8500-ton Injection Molding Machine, New Record of Ultra-large High Precision Injection Molding Machine in China



P23 K Show 2022

YIZUMI is ready for the global feast of the plastics and rubber industry



P25 Exploration in Medical industry

Here It Comes! Integrated Solution for COVID-19 Self-test Kits



P31 Customer Story

Well-tech: Lead Innovative Smart Home Brands Into the World Market by Means of DFMA Service



P37 YIZUMI Around the World

2022 Injection Molding Machines & Rubber Injection Molding Machines Exhibitions Review

We Walk alongside the World

K Show, held in Germany every three years, is one of the most important events for plastic injection molding industry. It offers a great opportunity for worldwide tech experts to get together and share their ideas.

It is well known worldwide not only because of its large scale, but of new business opportunities as many as possible it can trigger, to bring vitality to all relevant field of the whole industry.

From 2016 to 2019, the number of K Show exhibitors from China increased from 368 to 398. It witnessed the stronger power of Chinese rubber and plastics enterprises in a way.

Now, the influence of K Show 2019 is still impressive, while the K Show 2022 is coming up. Although the global slumping economy has brought challenges to the whole industry, forward-looking subjects such as sustainability, circular economy and intelligentization have provided new opportunities for the industry we are in.

In 2022, YIZUMI sets sail once again to the K Show. During the 8-day exhibition, we will show our strength and state-of-the-art technologies, and be ready to explore development direction with global customers through in-depth exchange.

We keep moving on with continuous innovation and breakthroughs to catch up with the trends. In the past three years, we have witnessed the establishment of the Germany Lippstadt Technical Center and the Brazil Service Center, the successful development of YIZUMI 8500-ton ultra-large injection molding machine, and the official operation of the Global Innovation Center and New India Gujarat Factory...

We believe the K Show will be a good platform to demonstrate our globalization results in technology, product, process, and brand building, and we would not let you down!

Looking forward to seeing you at K Show 2022!

First Issue, 2022
 For internal distribution only
 General Advisers: James Zhang, Wang Shihai, Li Binli
 Chief Editor: Sabrina Zhao
 Associate Editors: Zhou Manru, Luo Ruojing
 Text and Cover Design, and Electronic Page Makeup: Tan Guohui
 Technical Advisers: Li Donghai, Jiang Xiaojun, Li Baojian, Hou Yongping, Jin Hui, Glory Chen

Published by the Craft Editorial Dept.
 Guangdong Yizumi Precision Machinery Co., Ltd.
 Address: No.22, Keyuan 3 Road, High-tech Zone, Ronggui, Shunde, Foshan City, Guangdong Province, China, 528306
 Cell: +86-757-2926 2000 Fax: +86-757-2926 2266
 Website: www.yizumi.com
 E-mail: luoruoqing@yizumi.com

Disclaimer: All material is accepted on the understanding that it is copyright free. Craft accepts no liability for any subsequent copyright issues.

"Through the establishment of our Global Innovation Center, we connect the technologies between China and Europe, integrate innovation resources, and accelerate the application of new technologies. In the meantime, we will team up with the German R&D center in new processes and technologies to close the gap with our European competitors."

James Zhang

Deputy Managing Director of YIZUMI Group
General Manager of Injection Molding Machine Division



Enhance the Development and Innovation of New Products to Accelerate Globalization



Innovations weighing heavily on auto industry

At present, low carbon development has become the core issue of the entire automotive industry. Automakers and auto parts manufacturers are looking for ways to reduce the weight of the auto body for more efficient fuel consumption without affecting the performance and safety of the vehicle. This is especially the case after the boom of the new energy vehicle market. Major new energy vehicle manufacturers are doing everything possible to increase the range. Reducing the weight of vehicles is one of the important means to achieve this goal.

"In the context of the 'Dual-carbon goal' and new energy strategy, the adoption of cleaner energy and reduced energy consumption is the future trend in the corporate market." Mr. Zhang Tao, the deputy managing director of Guangdong YIZUMI Precision Machinery Co., Ltd. ("YIZUMI") and general manager of the injection molding machine division emphasized that "to keep pace with the development of the time, upstream material and equipment manufacturers must be one step ahead of the game."

YIZUMI has developed horizontal turntable multi-component injection molding machines, vertical turntable injection molding machine, and special headlight injection molding machines for the automobile industry. It has also developed new technologies such as PU injection molding process, lightweight physical and chemical foaming technologies, and LGF in-line mixing enhancement technology.

In addition, YIZUMI has intensified its efforts to develop all-electric and hybrid injection molding machines. So far, the product specification of the all-electric injection molding machine has been extended to 1380 tons. The DCIM system and the molding solution for biodegradable materials have been put into use to fulfill the needs of customers in the auto industry.

"Thanks mostly to the rapid growth of the new energy vehicle market, the global sales of YIZUMI's injection molding machines (including High-Speed Package System) in 2021 grew by about 27.70% YoY. The revenue generated by the automobile business now accounts for about 18.85% of the company's total revenue."

Based on its profound knowledge and know-how in the automobile industry, YIZUMI has started in-depth cooperation with domestic and foreign automakers and high-end auto parts manufacturers such as BYD and Röchling. In the future, along with the introduction of new processes and turnkey solutions, YIZUMI is expected to be engaged in the manufacturing for high-end automobile users and become the best cost-effective solution provider.





Focusing on product development and innovation

YIZUMI currently invests approximately 3-5% of its revenue in R&D every year and will keep increasing the investment in the future to develop leading-edge products, new technologies, and new processes to enhance its competitiveness in product technology and solutions.

"Through the establishment of our Global Innovation Center, we connect the technologies between China and Europe, integrate innovation resources, and accelerate the application of new technologies. In the meantime, we will team up with the German R&D center in new processes and technologies to close the gap with our European competitors."

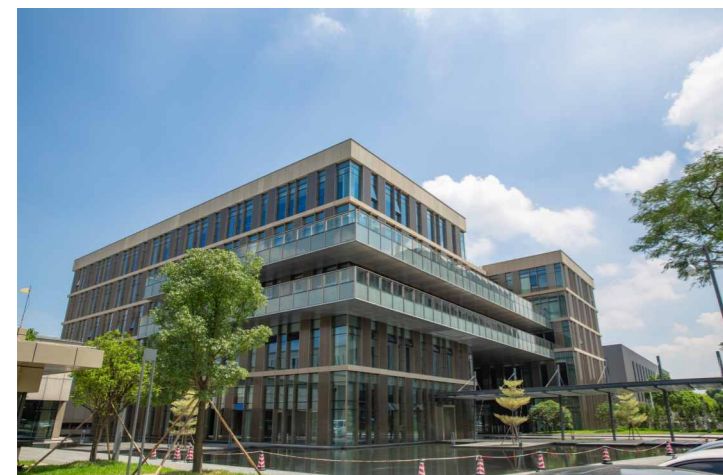
YIZUMI has just completed the installation of the self-developed 8,500-ton ultra-large high-precision injection molding machine. This ultra-large injection molding machine not only sets a national record in China in terms of machine tonnage but also adopts various advanced technologies such as precision mold-opening control technology, dual-screw synchronous plasticization and injection technology, and injection compression molding control technology to meet the molding process requirements of customers' products.

"It can be said that this machine is YIZUMI's milestone product." said Zhang Tao. "The development of this machine played a leading role in the R&D of large injection molding machines in the industry. In the meantime, we have also achieved the leading position worldwide in the field of industrial ultra-large injection molding machines."

8500T



■ YIZUMI 8500-ton Injection Molding Machine



YIZUMI Global Innovation Center



Accelerating the pace of globalization

In recent years, YIZUMI has strengthened its technical support and service capabilities in some important markets, including Germany, Brazil, India, Vietnam, Thailand, and the U.S. To achieve that, it has established overseas subsidiaries and set up sales outlets in more than 70 countries worldwide. Overseas sales are currently growing at a fast pace, with a revenue share of around 25%.

"In the past two years, the fastest-growing markets include not only the traditional markets in the developing countries but also the high-end markets in European countries such as Germany and Italy, indicating the rapid improvement of the overall competitiveness of our products." "The globalization deployment and strategy has become one of the most important driving forces for YIZUMI's future growth." said Tao Zhang.

Currently, YIZUMI has four injection molding machine production bases, namely the China Wusha Factory 1, the China Wusha Factory 2, the China Wujiang Factory, and the India factory. The monthly production of injection molding machines at these factories exceeded 1,000 units in 2021. In addition, the third factory in Wusha, Shunde and the new factory in Gujarat, India are currently under construction. They are expected to be operational in mid-2022. When the new factories become fully operational, YIZUMI's overall production capacity will increase by another 1,000 to 1,500 units per month.



■ YIZUMI China Wusha Factory 3 is under construction

"When the external environment changes drastically, a company's stable strategic deployment increases its resilience to risk. YIZUMI's goal in 2022 is to maintain a moderate growth." said Zhang Tao. "Over the past 19 years, YIZUMI has experienced many challenges. But we have always defied the odds with great resilience to stay on the path of growth." YIZUMI will adhere to its business philosophy of "Creating value for customers" and provide turnkey solutions with competitive and leading technologies to global customers.



Innovation

YIZUMI: Focus on Innovation, Vitality to Boost Development

Translated from Chinese, originally appeared in CHINA PLASTIC MACHINERY



2022, YIZUMI will celebrate its 20th anniversary. Over the past 20 years, the company closely followed the trend of technological revolution under the guidance of three strategies "product, operation, and globalization", and then smoothly completed transformation from a machine manufacturer to an integrated solution provider.

Standing at a fresh start, YIZUMI is ready. What new highlights are noteworthy in the future? We interviewed Mr. Jiang Xiaojun, Deputy General Manager of YIZUMI Injection Molding Machine Division, and invited him to share the current R&D directions and cutting-edge products of YIZUMI.

Technological innovation Engine for enterprise development

As a significant part of China's high-tech industries, the high-end equipment manufacturing industry is regarded as the backbone of the modern industrial system and the engine for industrial transformation as well as upgrading, involving the core manufacturing processes of various industrial chains. However, as the international trade environment is changing, how to resolve tricky technical problems becomes a priority in the high-end equipment manufacturing industry.

YIZUMI knows clearly that "intelligence" and "technology" are always the two main themes in enterprise development. Through some ups and downs over the past two decades, YIZUMI injection molding machine started from scratch and now has become top 2 in China, top 10 in the world relying on sustainable innovation. However, innovation also means constant challenges; Jiang Xiaojun is well aware of great responsibility and mission on his shoulder.

"Technological innovation cannot completely depend on the inspiration of technicians but follow scientific laws and methods. We try to start from the exploration of innovative theories, in the hope of improving the quality and efficiency by the introduction of TRIZ innovation method. Jiang Xiaojun said, "The government has given great support in terms

of the innovation environment while YIZUMI itself has also continued to increase investment in R&D, which has highly encouraged our technical staff."

As the Director of YIZUMI Injection Molding Technology Center, Jiang Xiaojun witnessed the rapid development of YIZUMI, and also sincerely felt the company's respect for talent. The company has always valued talent team construction, professional technology research and development. The R&D team comprised of experienced and highly talented technical experts has always maintained vitality and constantly improved itself. More than 200 patents have proved its innovative spirit.

In addition, YIZUMI has actively adjusted its planning and set up corresponding R&D departments based on its original organizational structure. Meanwhile, YIZUMI embraced the advanced European technologies with a more open mind and positive attitude and worked in close collaboration with European R&D institutions and partners. In terms of hardware investment, YIZUMI has set up the Global Innovative Center, the New Material and New Technology Testing Center, and a new technology pre-research cooperation project platform, delivering a strong signal of cooperation, openness and win-win to the world.



Jiang Xiaojun

Deputy General Manager of YIZUMI Injection Molding Machine Division and Director of YIZUMI Injection Molding Technology Center





Customer recognition
Successful connection between
technology and market

YIZUMI is committed to be the best cost-effective solution provider with cutting-edge technologies and strives to help customers to gain more competitive advantages. Therefore, what YIZUMI provides customers is not only machines but optimal services which focus on the price and performance of injection molding machines and their peripheral equipment.

"Combined with the industry trends and market demands, we constantly bring forth the new through the old to further strengthen our competitiveness." Jiang Xiaojun introduced: "We aim to improve the product design and manufacturing by using our professional technology and rich industry our professional experience, to better meet customer actual demands and solve customers' common issues."

For example, YIZUMI has deeply learned from the IPD (integrated product development)

mode of INOVANCE and other excellent enterprises, and successfully applied it to the development of A5 series machines. But most of all, we have found out the most appropriate development mode for our machines. At the same time, we regarded customer requirements and customer recognition as two core indicators of a successful product, to achieve the successful connection between technology and market.

In terms of product development, the company carries out a special project management mode with separate industry line and product line. Guided by senior industry specialists and technical experts, YIZUMI gains a deeper insight into customer requirements and industry trends. It helps customize special equipment for specific industries and provide customers with more competitive products, such as multi-component injection machines for car lights, high-speed injection molding machines for packaging, PET preform injection molding machines, injection molding machines for UPVC pipe fitting, BMC injection molding machines, C series multi-component injection molding machines, covering

automobile, medical, electronic and other fields. And the 8500-ton ultra-large high precision injection molding machine was newly developed in 2021, of which several performance indexes have reached the level of leading domestic counterparts.

In addition, the W series machine with long opening stroke is perfectly applied to deep-cavity product production, such as products used in waste classification. Besides, PLA special-purpose machine for environmental protection materials is under planning.



Circular economy
Products consuming less energy

Last century 90's, injection molding machine was described as "energy-consuming"; this is a tricky problem of the injection molding industry. After more than 20 years of development, energy-conserving technology is constantly innovating and evolving. With the emergence of several technological breakthroughs including variable pump technology, servo pump technology, all-electric servo technology, injection molding machine industry becomes the earlier one among the industries applied energy-saving technologies in the equipment manufacturing.

"For enterprises, it's more important to produce green products with low energy consumption in addition to upgrading technologies to save energy and reduce costs." Jiang Xiaojun stressed.

At present, YIZUMI has always been at a leading level in the industry in terms of energy-saving technology. Also with the

promotion and improvement of servo energy-saving technology in China, YIZUMI also shows a good performance in the R&D of power control technology, especially in the energy-saving technology of infrared screw and barrel.

As for the application and development of low energy consumption processes, YIZUMI is also constantly introducing new technologies to further reduce operating costs and enhance competitiveness for downstream manufacturers. For example, the successful development of "mixing-free and drying-free direct compounding injection molding technology" really cuts down carbon emissions by reducing granulation, packaging, storage, transportation and many other processes.

Talking about the trend of the energy industry, Jiang Xiaojun said: " 'circular economy' and 'carbon neutrality' are the general trends of the times, and they are also important social responsibility for manufacturers. In the future, YIZUMI will not only increase the investment in the development of energy-saving technology, but also enhance the promotion

of energy-saving products, such as large-scale all-electric injection molding machines, large-scale hybrid injection molding machines, constantly refining the product layout to further improve the energy-saving level."

As a manufacturing enterprise, no matter how the macro environment changes, YIZUMI will adhere to the idea of connecting China and Europe, never stop innovation. In the New Year, we are sincerely hoping that that global customers and partners can embrace transformation and release more energy together with YIZUMI.



Electric injection molding machine workshop at YIZUMI

ELECTRIC

New factory in India opened in Q3, 2022

Indian Market Has Become YIZUMI's Largest Single Market Overseas



As a modern material with multi properties, plastic plays an irreplaceable role in industry, agriculture or consumable Industry. Currently, India's plastic consumption is growing at an annual rate of 16%, much higher than those of China (10%) and the UK (2.5%), making it be one of the fastest-growing countries in the global plastics industry.

YIZUMI, as an important injection molding machine manufacturer in the industry, was well aware that the Indian plastic market had a huge potential and believed that the sooner we started up business, the more opportunity we could seize. Therefore, YIZUMI started manufacturing and business operations in India by leasing a factory since 2017, and built a good reputation in the local market because of the excellent product quality.

As of September 2021, up to 1,000 injection molding machines have been manufactured and sold by YIZUMI India, and the Indian market has become its largest single market overseas.

With the business expansion of YIZUMI India, the production capacity of the leased factory

was no longer able to meet the rapidly growing demand. Accordingly, YIZUMI purchased land in Gujarat, India to build our own modern factory in view of global strategy. At the end of August 2022, YIZUMI's new factory in India was officially put into use.

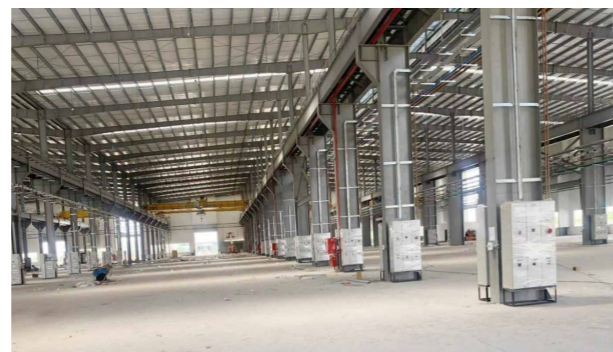
YIZUMI's new factory is located in the GIDC Industrial Park in Gujarat, adjacent to Mitsubishi Electric India, occupies an area of 80,000 square meters, and the annual output value is expected to hit 10 billion rupees. Its design and construction fully refer to the highest standard of YIZUMI headquarters, aimed to build a modern advanced production base of intelligence, digitization and precision.

YIZUMI India will work hard on product and service as always to better serve our customers. Externally, the company adopts a customer-oriented business approach, striving to provide customers with better pre-sales and after-sales service to increase customer confidence in buying and using YIZUMI's machinery. Internally, it will continue to strengthen the management infrastructure to ensure product quality, timely delivery, and market competitiveness.

Due to the special geographical location and connectivity of India, YIZUMI India attempts to drive market expansion to neighboring countries and regions, such as South Asia, Central Asia and Africa, on the basis of meeting the local market demand.

In recent years, YIZUMI's global layout strategy has been making steady progress, with the establishment of the German R&D center, YIZUMI Vietnam, and French spare parts center. The new intelligent production base in India with higher standard is YIZUMI's largest investment project in overseas markets to date, representing another solid step forward in its global layout.

As an important step of YIZUMI's global strategy, the India factory is a positive, forward-thinking attempt of this strategy. The successful experience of YIZUMI's India factory may also be copied to build many new factory of YIZUMI and contribute to the success of YIZUMI's globalization objectives.



■ New India Gujarat Factory opened in Q3, 2022

YIZUMI Smart Factory will be completed in the second half of 2022

Strive to Achieve Flexible Manpower Production Line Within 3 to 5 Years



YIZUMI China Wusha Factory 3 is located in Wusha Industrial Park, Guangdong Province, China with a land area of around 179,000 square meters. The Phase I construction has been completed, while phase II construction is estimated to be done in the second half of 2022, covering an area of 69,000 square meters and a building area of about 120,000 square meters.

Phase II construction is planned to build a smart factory on a basis of modern lean manufacturing concept, where intelligent equipment can be produced by assembly line method which is commonly operated in the automotive industry. In addition, it can introduce numerous intelligent production lines, intelligent equipment and modern industrial level software technology. Furthermore, we will continue to invest in digital transformation and run the digital technology through the entire machine production processes such as ordering, product design, configuration, production, logistics, final assembly and delivery.

We strive to build YIZUMI Smart Factory into a truly transparent and a data management factory within 3 to 5 years, so as to improve business performance by the power of data and achieve flexible manpower production. The project is expected to contribute a 4-billion output value of injection molding machines in the next few years after its operation.

Moreover, YIZUMI's new plant for super-heavy-duty die casting machines has been



■ Effect drawing of YIZUMI China Wusha Factory 3

officially completed in October. The plant is inside YIZUMI Wusha No.3 factory, which covers a total area of about 23,000 square meters and costs 160 million CNY, and it will be used to produce and assemble ultra-large die casting machines. Its height and span has been increased during planning and construction and it will be available to assemble super-heavy-duty die casting machine of 20,000 tons in the coming years.

In the near future, YIZUMI China Wusha Factory 3 will work hand in hand with other YIZUMI factories to build a high-end intelligent equipment industry cluster, which is integrated with headquarters, production bases, industrial Internet, overall solutions for compression molding, and incubating platform. The production capacity of the

YIZUMI group will exceed 5 billion CNY after its completion and we are striving to build a brand new YIZUMI.

Please look for more to come!



Exhilarating Technical Breakthroughs

YIZUMI 8500-ton Injection Molding Machine, New Record of Ultra-large High Precision Injection Molding Machine in China



At the end of February 2022, YIZUMI has finally unveiled its milestone product, 8500-ton ultra-large high precision injection molding machine. It is the largest injection molding machine by now in China.

The 8500-ton ultra-large high precision

injection molding machine has been hailed as one of the noticeable breakthroughs of YIZUMI. It is not only the largest machine ever to be installed in China in terms of tonnage, but also could meet the customer requirements in molding process relying on its advanced technologies, such as precision

control technology, thick-wall injection molding technology for large transparent parts, two-shot units co-injection molding technology, and injection compression molding technology.



Deputy Managing Director of YIZUMI Group & General Manager of Injection Molding Machine Division, Zhang Tao introduced: 'The R&D of the 8500-ton ultra-large high precision injection molding machine has taken a leading role in the development of large-scale injection molding machine for the whole industry. Our ultra-large injection molding machine is also occupying the leading position among our counterparts worldwide.'

THE GREAT MACHINE

The clamping force up to 9000 tons, setting industry record

Walking into the workshop of YIZUMI Wujiang factory, people can see the 8500-ton ultra-large high precision injection molding machine standing quietly like a marvelous cruise. This super large injection molding machine reminds people of their smallness but also the greatness of the engineers. How did they make such a heavy machine with their tiny bodies?

Zhang Min, deputy head of development section of technology department (Two-platen IMM), said the machine is about 27 meters in length and it generally takes 22.5s to walk around one time. The overall height of the machine exceeds 6 meters, higher than a 2-storey building. It covers 251 square meters, an area larger than 3 badminton courts. When it comes to the core components, a single platen weighs over 140 tons, equivalent to 23 Asian elephants.

'It took 4 months to assemble the whole machine and at least 30 technicians worked on it'. Zhang Min stressed, 'In the past, the core technology of super large injection molding machine was mostly grasped by foreign enterprises. Now, the success of YIZUMI 8500-ton injection molding machine, of which the rated clamping force is 8500 tons and the maximum can reach up to 9000 tons, marked a significant breakthrough in key technologies for domestic ultra-large two-platen injection molding machines, and also set a new record of the ultra-large precision injection molding machine in China'.



CLAMPING FORCE UP TO 9000 TONS

CREATED BY THE INGENUITY Solving the molding difficulties of large-sized transparent plastic part in China

The 8500-ton ultra-large high precision injection molding machine is a key product that YIZUMI built with great effort in recent years. "Compared with counterparts at home and abroad, the most important innovation of this machine consists in its mold opening and closing repeatability up to $\pm 0.3\text{mm}$ and two injection units with a maximum shot weight of 80 kg, breaking the record of ultra-large injection molding machine in China." Zhang Min introduced. It can be used in one-step molding of large-sized transparent plastic parts (or with metal inserts) with high requirement in part shape, light transmittance and accuracy, solving the molding difficulties of large-sized transparent plastic part in China.

Besides, the machine incorporates cutting-edge technologies in the industry, including injection compression molding (ICM) technology, Smart Clamp technology, internal circulation two-platen clamping unit and closed-loop pump technology special for optical products. The control system integrates smart control technology, information technology and Internet technology independently developed by YIZUMI. And the machine is of high precision, high speed and intelligence, energy saving attained 30% compared with traditional three-platen machine.



The success of the first domestic 8500-ton ultra-large high precision injection molding machine is inextricably linked to the great efforts of YIZUMI R&D team. The machine is specially designed for the production of large-sized products, especially suitable for the fields of aerospace, automobile industry, petrochemical pipeline, transportation facilities, etc. Also, our problem-solving team has tackled a series of challenges in processing, transportation and assembly for ultra-large equipment, providing customers with more cost-effective integrated solutions for the manufacturing of ultra-large transparent plastic parts.

PROMISING FUTURE Extending machine range to provide customers with integrated solution of large-sized plastic parts

With the rapid development of domestic aerospace and automobile industry, the demand for super-large injection molding products is gradually increasing. YIZUMI will continually develop new products, new technology and new process, to improve the integrated solution for super-large injection parts. One-step molding of large plastic components achieved by integrating different in-mold technologies, replacing the assembling production of small and medium size plastic parts, will gradually become a new technical trend.

'The maximum tonnage of YIZUMI injection molding machine is 4,500 tons for now. In the future, we will continue to expand

tonnage range for all series machine, from 4,500 tons to 8,500 tons.' Zhang Tao introduced. 'It took two years from the initial negotiation with customers to the final prototype. When building this machine, there were many parts that our original supply chain could not provide, so our project team had to spend a lot of time exploring new suppliers.'

At present, the prototype of 8500-ton ultra-large high precision injection molding machine has been built on target, and the integration testing is underway, involving the mold, robots, hot runners, mold temperature controllers, and control system. Zhang Tao said: 'This machine can be regarded as a milestone for YIZUMI because it is currently the largest injection molding machine in China in terms of tonnage and shot weight.'

'It's more than big. The machine also adopts new technologies including injection compression molding technology and two-

shot units co-injection molding technology.' Zhang Tao stressed that the successful development of this machine opens a window to the application of large plastic parts and provides a lot of possibilities. It also plays a leading role in the development of large injection molding machine in the whole industry.



※ 1. The Data above were acquired by testing in YIZUMI's factory, only for your reference. The specific data please refer to the actual equipment.
2. The product pictures and content above are only for your reference. The product effects (including but not limited to appearance, color and size) may be slightly different, please refer to the actual products.



UN260C-BTP ReactPro Multi-component Machine

New Exploration in One-step Molding of Polyurethane and Plastic



In recent years, there is an upsurge of lightweight by replacing metal parts with plastic. Automobile manufacturers attempt to find new processes and technologies to improve the appearance of automotive trims. Simple molding process used in the past can no longer meet the new requirements in color, tactility, intelligentization and other aspects.

As a new type of 'intelligent' material, Polyurethane (PUR) has some better properties, such as good flexibility, high wear-resistance and well self-repairing performance. Furthermore, it is superior in free color matching, bright colors, and friendly to 'smart inserts'. Therefore, it has been widely used to the injection molding products with decorative skins, high-quality paint or functional coatings.

To quickly react to new market trend and better satisfy customer demand, YIZUMI and Chengdu Dongri Machine Company jointly research and develop the integrated ReactPro Solution to achieve one-step injection molding of the polyurethane and plastic. That is to produce high quality thermoplastic parts and polyurethane surface on the same machine, showing

better appearance, comfortable tactility, and superior functionality.

The YIZUMI UN260C-BTP ReactPro Multi-component injection molding machines integrate the PUR reaction injection molding equipment with vertical rotary table mold technology, which can offer rapid and precise molding, and efficiently produce different kinds of decorative products with 3D depth of field effects or different patterns.

The machine can not only save material cost and ensure product performance but also allow PUR covering on the surface of irregular-shaped plastic parts, therefore leading to more sophisticated visual and tactility. Through the PUR filling molding process, this machine can achieve PUR molding thickness of 0.1- 50mm, with wider application. PUR thin-layer parts are mostly used for decorative parts such as center consoles and operator panels, which can achieve different visual effects, including gloss, matt or 3D depth of field. Moreover, they have the characteristics of scratch resistance, aging resistance, fingerprint resistance, and self-repairing. While PUR thick-layer parts can be used for car armrests and other trims, featuring strong aging

resistance and weather resistance, and as well as rich visual effects.

Compared with the traditional process, this solution integrates the injection molding machine and the polyurethane reaction molding equipment to achieve a one-step molding, which greatly improves the production efficiency, reduces the cycle time and the production cost, also avoids pollution, making it more energy-saving and environmentally friendly. From the customers' perspective, UN260C-BTP ReactPro is a cost-effective and valuable solution, which will be used in a wide field of applications, e.g. automobile, 3C products (Communication, Computer and Consumer products) and household appliances etc.



■ YIZUMI UN260C-BTP ReactPro Multi-component Injection Molding Machine

※ 1. The Data above were acquired by testing in YIZUMI's factory, only for your reference. The specific data please refer to the actual equipment.
2. The product pictures and content above are only for your reference. The product effects (including but not limited to appearance, color and size) may be slightly different, please refer to the actual products.

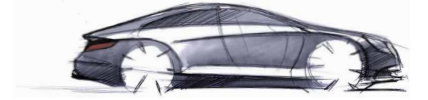


Value Advantage:

1. The integration of injection molding machine and polyurethane reaction molding equipment can achieve one-step molding of two materials (plastic + PUR) with short cycle time, high efficiency and low cost.
2. Applied with rotary table mold technology to achieve fast and accurate molding is a new exploration of ReactPro one-step molding mold.
3. This machine can achieve PUR molding thickness of 0.1- 50mm, with wider application.
4. It allows multiple product effects, such as 3D depth, different patterns, scratch resistance, and self-repairing, agile, intelligent and efficient.
5. It can allow IML/IMD/IME/INS processing with the support of automatic system, to conduct film mounting under the PUR thin-layer, ensuring that products not only have beautiful appearance but also more functions.
6. The injection molding machine control

system can not only offer editing functions to meet special mold and process requirements, but also provide various integrated solutions of special process control software.

7. PUR reaction molding system
 - a. Support zero-downtime operation to maintain the stable system
 - b. Flow Range $\geq 3g/s$
 - c. Machine Capability Evaluation Index CMK > 2.3
 - d. No bubbles on the product surface to achieve Class A surfaces
8. The communication control system of integrated PUR reaction molding equipment can achieve unified adjustment of process parameter, with well-designed and user-friendly control panel.



HMI



HMI (Human Machine Interface)
 Number of cavities: 2
 Material: PC/ABS + PU
 Size (L×W×H): 250*58*7mm
 Weight: 55g/pc
 Cycle Time: 56s

PAC380K3 High-speed Injection Molding Machine

Upgrade to be More Competitive



■ PAC380K3 High-speed Injection Molding Machine



To keep up with fast-changing business environment, companies are eager to find ways to upgrade processes to improve production efficiency. Especially in the thin-wall packaging industry, cycle time shortened by one second may enlarge production capacity by 20%, or even more than 50%. Therefore, high-speed molding and mass production are of great importance to thin-wall plastic packaging molding.

YIZUMI always react quickly to current marketing situation and provide customers with more competitive integrated solution for PAC380K3 high-speed injection molding machine. It has brought stable and high-speed solution for thin-wall products in the industry of the disposable packaging, IML food packaging, medical packaging, and disposable consumable.

PERFORMANCE UPGRADE TO ENSURE QUALITY Provide Economic Benefits for Customers

Considering the development trend of individualization and high production efficiency of thin-wall containers, YIZUMI PAC-K3 series high-speed injection molding machines are suitable for molding multi-cavity thin-wall packaging products, with the advantages of high rigidity, high injection rate, high precision, etc.

The maximum system pressure of the PAC380K3 high-speed injection molding machine is increased by more than 10% and thus reaches 19MPa, and its overall mold clamping rigidity is increased by more than 25%, which facilitates the molding of thin-wall and deep-cavity products.

While realizing the increase in production capacity, customers also care about product

quality. Adhering to YIZUMI's design concept for high-speed molding, PAC380K3 adopts platen, tie bar, frames of better mechanical performance, and increases the length-diameter ratio of the screw and barrel to 24:1 for better plasticizing quality, more stable product size and higher flexibility.

In the production process, a high-rigidity and stable machine frame is a strong guarantee for the continuous high-speed operation of the machine. The frame design of the PAC380K3 high-speed packaging injection molding machine completely considers user-friendliness, daily maintenance, safety performance and other functional requirements, thereby bringing better customer experience.



CUSTOMIZED FOR THE BEST MATCH

Provide customers with one-stop service

The packaging industry is a field of rapid technological upgrading. How to free customers from repeated investment after equipment purchase and meet the diversified production needs in the future is a more important factor to be considered by YIZUMI in making integrated solutions.

Most of YIZUMI solutions are customized as per customer requirements. With an in-depth understanding of customer needs and market trends, the professional technical team is familiar with customers' future product line plans, and adopts the best models, molds, materials and auxiliary machines to ensure sufficient expansion margin for customers' production.

For different customers, YIZUMI can customize different equipment solutions, and can build a turnkey solution for customers. From the early plant layout and planning, equipment model selection and auxiliary setting to production line commissioning and personnel training and then to the final smooth production, YIZUMI can provide customers with an overall and detailed solution in one stop.

Advantages of PAC-K3 series:

1. The system pressure and injection speed are upgraded to ensure the stable molding of thin-wall multi-cavity products;

2. Configuration upgrade: PAC380K3 and above model are generally equipped with hydraulic synchronous plasticizing function, which shortens the product molding cycle;

3. The upgraded clamping unit can provide larger clamping force, better facilitating the molding of thin-wall and deep-cavity products;

4. Control system upgrade: The PAC-K3 equipped with Inovance Iventure System has faster response and higher control accuracy;

5. The humanized design of the machine facilitates daily operation and maintenance;

6. Wide range of application: widely used in food packaging, beverage packaging, disposable medical consumables and other industries.

For more detailed information, please feel free to contact us.

Email: imm@yizumi.com



Product: COVID-19 vaccine atomizing cup
Material: PP/K4535
Capacity: 500ML
Number of cavities: 8
Product weight: 16g/each
Cycle time: 8s

※ 1. The Data above were acquired by testing in YIZUMI's factory, only for your reference. The specific data please refer to the actual equipment.
2. The product pictures and content above are only for your reference. The product effects (including but not limited to appearance, color and size) may be slightly different, please refer to the actual products.

K3

YIZUMI Launches the AR Enterprise Cloud Platform



Providing AR-based new digital interaction solutions

AR (Augmented Reality) technology is a technology that integrates virtual images into real-time images. Through real-time tracking, 3D modeling, intelligent interaction, etc., virtual information is applied to the real world, bringing about real-time, convenient and intuitive interactive experience for users.

In recent years, with the increasingly mature technology and growing demand, the AR technology has been widely used in the manufacturing industry, creating new possibilities for remote communication and collaboration in industrial scenarios.

The latest AR enterprise cloud platform developed by YIZUMI is based on the real-time data acquisition technology of the industrial Internet, combined with AR technology and 3D modeling, providing such services as remote collaboration, product exhibition and remote training with reduced collaboration costs, improved communication quality and new digital interaction experience.

help. After receiving help requests, remote experts will provide remote operation guidance through live broadcast, AR annotation and voice explanation. They can also use such information resources as documents, drawings and 3D models to efficiently help maintenance personnel solve problems.

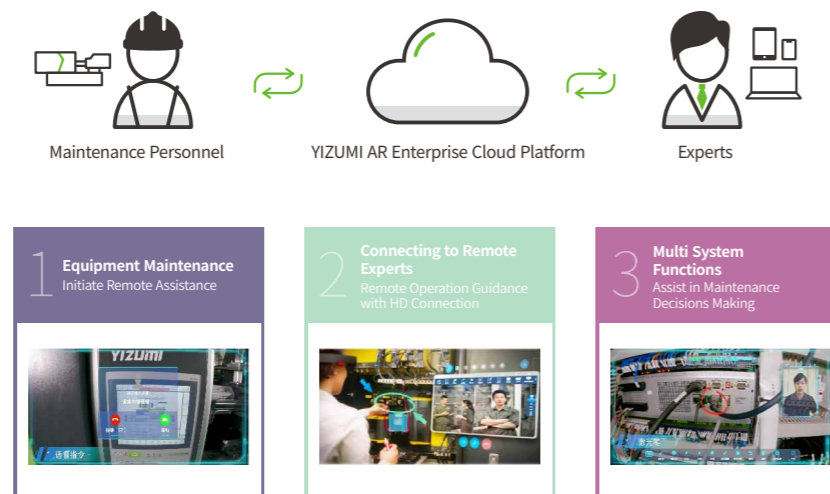
This remote collaborative communication method can solve the "three major problems" in YIZUMI equipment remote maintenance scenario (i.e. difficult to make accurate positioning, difficult to provide accurate instructions and difficult to communicate operation details), thereby greatly saving the cost of cross-regional communication and avoiding the risk of pandemic transmission caused by face-to-face contact.



AR REMOTE COLLABORATION "Bringing" Experts to the Site

Customers sometimes have equipment maintenance and daily maintenance problems. The YIZUMI AR enterprise cloud platform can realize remote collaboration through such technologies as augmented reality, audio and video calls, call centers and document transmission, thereby breaking the geographical limits for maintenance personnel and experts and allowing experts to provide immediate guidance and troubleshooting as if they were on site.

Through this platform, front-line maintenance personnel can carry out audio and video communication with remote experts, and transmit live pictures in real time to them for



AR PRODUCT EXHIBITION Upgrading Interactive Experience for Customers

In addition to remote communication and collaboration, the YIZUMI AR enterprise cloud platform can also be combined with IoT and visualization technologies to bring about more intuitive customer experience. For example, based on the 3D model of the equipment, a salesperson can display the selling points of the equipment through 3D interactive animation, and place the 1:1 model of the equipment in the real environment through the AR technology.

Customers can wear AR glasses or use mobile devices (e.g. mobile phones and pads) to view the real size, disassembly, operation principle and operation instructions of the products, so as to know more about the products from multi-sensory dimensions, such as vision, hearing and interaction.

In addition, the AR enterprise cloud platform can overcome language and geographical barriers by means of AR-based remote sales, showing overseas customers the equipment in full size wherever and whenever possible to enable customers to know more about the equipment and promote transactions.



AR 1 to 1 Restoration

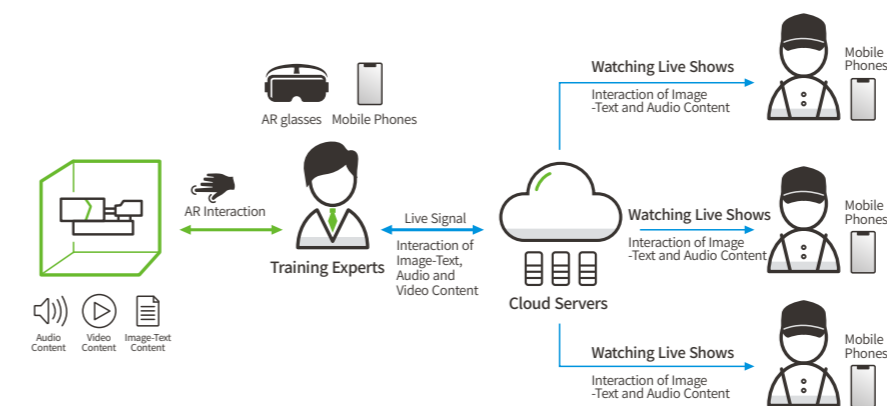
AR REMOTE TRAINING Facilitating Efficient Learning

In the traditional training of the manufacturing industry, there is often a lack of interaction between trainers and trainees, which makes it hard for trainees to get answers promptly. Moreover, the lack of field operation makes it hard to practice in production the knowledge learned in the training process. The YIZUMI AR enterprise cloud platform provides a new "immersive" training solution for enterprises.

The training experts wear AR glasses and enter AR remote audio and video calls through the YIZUMI AR enterprise cloud platform. Students in different regions can watch the teachers' practical operation in the headquarters workshop from the first perspective in front of the screen. Teachers can teach while operating, and students can raise questions simultaneously. Through the

cloud platform, teachers can carry out on-site demonstration to solve students' problems in time, thereby facilitating efficient learning.

As a leading company in the field of injection molding machines, Yizumi, based on the demand and market for digital transformation of the industry, hopes to provide customers with more convenience and a better experience by launching the AR enterprise cloud platform. In addition, the Yizumi AR enterprise cloud platform will be deeply integrated with YiCMS and YiMES intelligent manufacturing execution systems to create a Yi+ intelligent manufacturing platform, so as to provide industry-leading digital upgrade solutions and create more value for customers.



YIZUMI Yi+Future Intelligent E-power Greener Yi+future

Eco-friendly **E**nergy saving **E**asy-used **E**fficiency **E**conomic



YIZUMI Is Ready for Germany K Show 2022



K show 2022, the global exhibition of the plastics and rubber industry, will be held in the entire Messe Dusseldorf in Germany from 19th to 26th, October, 2022

YIZUMI will seize the opportunity and show global customers with overwhelming strength and state-of-the-art technologies, also the hi-tech power of Chinese enterprise.

K Show 2022, here we come!



China has been Germany's vital trade-partner for 6 consecutive years

Germany located in Central Europe is not only the ties of economic and technical exchange among regions, but also a significant part of development in Europe. In 2018, Germany became the global innovation ecosystem and it is famous for its advanced manufacturing.

In recent years, China extends the trade-partnership with African and European regions through policies of China-Europe Railway Express and the Belt and Road. Also, it provides opportunities to develop bilateral trade for China, Europe and Africa.

According to the official data from Germany, China has been Germany's vital trade-partner for 6 consecutive years at the end of 2021. The data demonstrates that the export and import volume between China and Germany is 245.4 billion Euros, an increase of 17.8% from 2020. Obviously, China and Germany always keep trade-partnership closely.



Germany Aachen R&D center in Germany is the new engine for YIZUMI innovation

Germany is not only a vital trade-partner with China; also it is a standard for global industry.

For the strategy of globalization, YIZUMI established a R&D ((Research & Development)) center in Aachen, Germany at the end of 2017. It has its unique mission to act as, the YIZUMI innovation engine and drive technology and products upgrading.

To better satisfy German customers' demand, YIZUMI respectively established technical centers in Nuremberg and Lippstadt, Germany in recent two years, with an area of 2600 square kilometers. Two technical centers mainly offer a sales and service net for injection molding machines.

In the processing of management, the demands from high-level class have been rising gradually. It boosts YUZIMI to innovate

its technology and accelerates the process of connection with Germany market.

YIZUMI will show technical power against global counterparts

K Show 2022, one of the most influential large-scale exhibitions for the plastics and rubber industry, is not only a wind vane for industrial development but a good communication platform for worldwide experts.

As a supplier for advanced molding solution, YIZUMI positively reaches advanced European technologies and deeply discovers applications of new materials and technologies. Also YIZUMI offers competitive solutions to customers through the latest products and processes. As an exhibitor of K Show 2022, YIZUMI will display advanced products and solutions to global customers and compete with global counterparts in the show.

'Circular economy, digitalization and climate conservation' are the key topics in K Show 2022. Thus, in this exhibition, there will be a focus on how industrial solutions answer the call of digitalization, artificial intelligence and sustainable development.

Meanwhile, YIZUMI will exhibit in the Show with the slogan "Intelligent E-power, Greener Yi+Future" and display advanced products and solutions to global customers.

For more information about YIZUMI on K, please visit the information below.



YIZUMI IMM booth: Hall 13C77
YIZUMI RIM booth: Hall 14C59



Germany Aachen R&D Center and Technical Center



Germany Nuremberg Technical Center

Here It Comes! Integrated Solution for COVID-19 Self-test Kits



"No need to line up for testing", "flexibly used on different occasions", "getting results within 15 minutes", "easy to use"...

As a more convenient diagnostic method for COVID-19, self-test kits have become a hot topic in a short time.

The popularity of at-home COVID-19 tests brought manufacturers not only new market opportunities but the challenge of cost control.

YIZUMI, as an integrated solution provider of injection molding production, is dedicated to providing customers with cost-effective solutions.

Let's take a closer look at the integrated solution of self-test kit:

Self-test kit: made up of top case and bottom case

Quality requirements and processes

- ◆ NOT allow warping, deformation, flash and apparent flow mark.
- ◆ Robot pick-up
- ◆ Marking treatment on the top case's surface, like spray printing or laser marking
- ◆ Common material: PS

Mold structure: It usually adopts the design of semi-hot-runner and edge-gate to ensure the beautiful appearance of products. It also can effectively control the cost of mold and material and reduce the cycle time.

Common cavity number: 32, 48, 64

Common machine range: 200 tons, 260 tons, 320 tons, etc.

In addition to the startup cost for machines and molds, the production efficiency of a single machine, namely the cycle time, is the essential factor determining the production cost.

Let us take 32-cavity mold as an example, performing it under the common production cycle (15s, 11s, and 8.5s) to see the capacity difference. Number of cavity Injection Cycle Capacity/day(22 hours) Capacity difference/day Capacity/month(30 days) Capacity difference/month

The above data shows huge differences in the production capacity, up to 2 million pieces per month, though using the same 32-cavity mold. Clearly, how important to choose suitable injection molding machine!

YIZUMI injection molding machine is a perfect choice for you! It can satisfy different demands of production capacity and investment cost. Particularly the following two series:



Number of cavities	Cycle Time	Capacity / Day (22 hours)	Capacity Difference / Day	Capacity/Month (30 days)	Capacity Difference / Month
32	15	169,000		5,070,000	
32	11	230,400	61,400	6,912,000	1,842,000
32	8.5	298,200	67,800	8,946,000	2,034,000

YIZUMI A5 Series High-end Servo Injection Molding Machine

A5 Series is one of YIZUMI's best sellers. Being equipped with the third-generation servo hydraulic system, A5 Series machine has the advances of strong power, fast response, and low energy consumption. Support with suitable molds, the molding cycle time of self-test kits can be reduced to 11±1 seconds.



YIZUMI PAC Series High-speed Injection Molding Machine

PAC Series features with high rigidity, fast injection speed, quick mold opening and closing, and short response time. With suitable molds, the molding cycle time of self-test kits can be shortened to 8.5±1 seconds.



We can offer the integrated solution of self-test kit, involving machine, mold, robot, etc. Up to now, this solution has been applied to many customers.

Warm Reminder

In addition, YIZUMI also provides other great solutions for other medical products, such as virus transport mediums, deep well plates, PCR plates, etc. Please feel free to contact us!

*The Data above were acquired by testing in the factory, only for your reference. As to the specific data, please refer to the actual equipment.



※ 1. The Data above were acquired by testing in YIZUMI's factory, only for your reference. The specific data please refer to the actual equipment.
2. The product pictures and content above are only for your reference. The product effects (including but not limited to appearance, color and size) may be slightly different, please refer to the actual products.

YIZUMI Integrated Solution for Deep-well Plate Help Fight Against COVID-19



The deep-well plate, a common laboratory consumable, is also one of the main consumables used for COVID-19 detection.

As a leading manufacturer of injection molding machines, YIZUMI has launched a deep-well plate solution to support the development of medical industry and meet the demand for anti-pandemic supplies.

Classification of deep-well plate:

Number of wells: 96-well and 384-well;

Capacity: 0.36ml, 0.4ml, 1.0ml, 2.0ml, 2.2ml, etc.

Well pattern: round well and square well;

Well bottom shape: U-shaped and V-shaped.

Sample storage:

It can be used to store samples in place of the conventional 1.5 ml centrifuge tube and can be put in order, offering more storage space. And it can be kept in a refrigerator at as low as - 80 °C. Thus, it is also called a storage plate.

Sample processing:

It can be used with discharge guns, high-throughput automatic liquid operating instruments and software to perform high-throughput operation of biological samples, such as protein precipitation, liquid extraction, nucleic acid extraction, etc., thereby greatly improving the sample processing efficiency.

Sample injection:

It is generally used for automatic equipment and can be directly placed in the sample bin of the automatic equipment for injection. Compared with the traditional injection, it can not only double the number of samples arranged in the sample bin, but also realize the direct injection of samples after treatment on the 96-well plate, without bothering to draw samples back and forth, lay samples and put on lids.



Product performance and quality requirements:

- ◆ Able to withstand high-pressure sterilization at 121°C
- ◆ Able to withstand freezing at - 80 °C
- ◆ Able to withstand centrifugal force >=3000 xg
- ◆ Low liquid residue
- ◆ No leakage after sealing
- ◆ No RNA/DNA enzyme pollution, no pyrogen pollution, etc.
- ◆ Appearance: no oil stains, no scratches, no obvious shrinkage, no obvious bubbles
- ◆ Dimensional tolerance: product surface flatness of 0.2mm, well wall thickness of +/- 0.1mm, etc.

Deep-well plate solution

In terms of deep-well plate product, how to improve the stability of product quality and production efficiency is of great importance for customers.

YIZUMI can make it! YIZUMI FF200 electric injection molding machine equipped with two-cavity mold can achieve the minimum cycle time of 30 seconds, and the daily production capacity of a single machine can reach 5,500 pieces of deep-well plates.

Information about FF series electric injection molding machine: YIZUMI FF series electric injection molding machine is of high precision, high stability and high intelligence. With the modular concept, YIZUMI can manufacture injection molding machines of different tonnages, equipped with various injection units and configuration as per the requirements of production quality and production capacity; it can not only adopt

such intelligent configurations as intelligent clamping force control and integrated control of hot runner temperature but also connect to the MES system for intelligent production.

*The Data above were acquired by testing in the factory, only for your reference. As to the specific data, please refer to the actual equipment.



YIZUMI FF200 Electric Injection Molding Machine

※ 1. The Data above were acquired by testing in YIZUMI's factory, only for your reference. The specific data please refer to the actual equipment.
2. The product pictures and content above are only for your reference. The product effects (including but not limited to appearance, color and size) may be slightly different, please refer to the actual products.

YIZUMI Integrated Solution for Disposable Virus Sampling Tube to Facilitate Massive Nucleic Acid Testing



The disposable virus sampling tube, mainly used to collect and keep virus samples taken from throat or nasal secretions, is one of the important consumables used for COVID-19 detection.

The disposable virus sampling tube, mainly used to collect and keep virus samples taken from throat or nasal secretions, is one of the important consumables used for COVID-19 detection.

There are generally two kinds of disposable virus sampling tubes:

Non-inactivated tube, which can protect the protein and nucleic acid of the virus;

Inactivated tube, which can protect the nucleic acid by cleaving the protein of the virus

Size: 2ml, 5ml, 7ml, 10ml, 20ml, 30ml, etc.



Major Function:

Used for sampling and monitoring the infectious pathogens by the CDC and the clinical departments of hospital;

Used to keep the nasopharyngeal swab samples or the samples of specific parts for easy transportation, like from sampling site to the testing laboratory;

To keep the nasopharyngeal swab samples or the samples of specific parts for necessary cell culture;

Requirements for product quality and performance:

Clean, smooth and transparent tube

Nozzle and cap free of sharp edges and burrs

Resistant to high temperature (121°C) and low temperature (-80°C)

Spiral seal with moderate tightness to avoid leakage

Wall thickness tolerance +/-0.15mm

No RNA/DNA enzyme pollution



Integrated Solution for Disposable Virus Sampling Tube

As a well-known manufacturer of injection molding machine in China, YIZUMI can provide integrated solutions for medical injection molding products.

Due to large consumption of virus sampling tubes used for nucleic acid extraction, it is crucial to help the customers enhance efficiency and increase production capacity!

For example, using YIZUMI PAC350 high-speed injection molding machine equipped with 48-cavity mold for the production of 10ml sampling tube body, the daily production capacity of single machine is up to 310,000 pieces.

Also using YIZUMI PAC300 high-speed injection molding machine for the production of 10ml virus sampling tube cap, the daily production capacity is up to 420,000 pieces.

High-speed injection molding machine is of high injection speed, fast response and low energy consumption. It can improve production efficiency of the virus sampling tubes to reduce production costs.

In addition, YIZUMI also can offer integrated solution for other medical products relating to COVID-19 detection and in vitro diagnostic testing. For more details, please feel free to contact us.

For more details, please feel free to contact us. Email: imm@YIZUMI.com

*The Data above were acquired by testing in the factory, only for your reference. As to the specific data, please refer to the actual equipment.



PAC350 High-speed Injection Molding Machine

※ 1. The Data above were acquired by testing in YIZUMI's factory, only for your reference. The specific data please refer to the actual equipment.
2. The product pictures and content above are only for your reference. The product effects (including but not limited to appearance, color and size) may be slightly different, please refer to the actual products.

TUBE

Disposable Virus Sampling

Well-tech: Lead Innovative Smart Home Brands Into the World Market by Means of DFMA Service



Guangdong Well Technology Co., Ltd. (hereinafter referred to as Well-tech), founded in Shenzhen 23 years ago, has grown to be a high-tech enterprise with an area of 160,000 square meters. Though challenged with the epidemic, Well-tech has rapidly grown and continued to increase capital and expand production. And it has become an excellent supplier that supplies goods to such big brands as Narwal, MIUI, Ecovacs, Nissan Motor, Xiaopeng Motors and Honda Motor. As you see, the goods in the front waiting to be loaded and shipped out are piled up, and workers are busy pushing carts back and forth.

Currently, its customer service scope involves two main fields: automotive electronics and the smart home hardware, such as self-cleaning sweeping robots, floor scrubbers, air purifiers, household energy storage products and smart pets. Also, Well-tech has established an engineer team with 23 years of experience to provide innovative entrepreneurs with free DFA/DFM engineering analysis for the industrialization of new products, promote the customers to optimize product design, help the customers reduce BOM costs and improve production efficiency in order to facilitate product launching. In addition, it provides one-stop manufacturing services, such as precision mold manufacturing, injection molding, secondary processing, finished product assembly, etc.

PURSUING HIGH QUALITY High-end Equipment Boosts High-quality Development of Enterprises

In the Well-tech factory, a number of YIZUMI injection molding machines are running properly. Since 2016, it has established a cooperation relationship with YIZUMI to introduce more than 100 A5S series injection molding machines in succession.

With regard to the cooperation with YIZUMI, Ning Jianqiang, Board Chairman of Well-tech, said, "As recommended by my friends, I went to YIZUMI for field investigation. Its workshop management, process control and quality control were impressive. The attitude towards workmanship also shows the enterprise's attitude towards the quality and the expectation of the market. Thus, we chose YIZUMI."

As an enterprise producing new smart home products, Well-tech successfully entered the supplier system of such floor sweeper brands as Narwal and MIUI in 2018. With "unexpected" quality delivery performance made for the customers launching new products, it has attracted many innovative brands of intelligent hardware to lay a solid foundation for its official listing.

Smart home products with a nice appearance can stimulate the consumers' desire to buy. Therefore, the molding of product appearance parts is of great importance. Ning Jianqiang said, "Such parts have a large size and are subject to high requirements for assembly relationship, product surface and sense of quality, which requires high precision and stability of the production equipment."

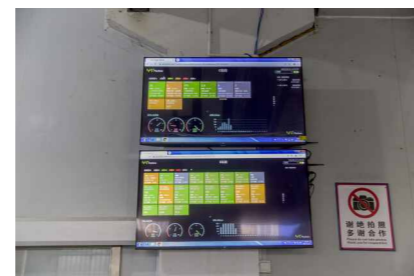
So Well-tech has introduced YIZUMI's A5S series injection molding machines integrated with the third-generation servo system and the hydraulic oil circuit for optimization and operation resistance reduction, thereby ensuring the machines' reliable and stable operation, low noise, strong power, fast response and low energy consumption.

Ning Jianqiang said, "So far, YIZUMI's injection molding machines have met the production requirements, which can produce high-gloss appearance parts free of black spots, flow marks, bubbles, splay marks and other defects. The machines can reach the pass rate of 98% or above, thus ensuring the high quality of products."

MARKET-BASED YIMES System for Innovative Factory Management

With the growth of performance and the increase of equipment and production workshops, Well-tech's difficulty in management has also increased significantly. How to carry out lean management and real-time production status monitoring has always been the crucial issue faced by Ning Jianqiang.

In this regard, further cooperation between Well-tech and YIZUMI was carried out. YIZUMI's intelligent interconnection technology team went to Well-tech's workshops involving all links and processes of production so as to provide solutions. At the end of last year, Well-tech officially launched YIZUMI Yi+ intelligent manufacturing platform, opening a new track for informatization and digital management of factories.



"Up to now, digital transformation has become the inevitable choice of enterprises seeking opportunities in crisis, and also the general trend of economic and social development. The companies wanting to go further must combine production with digitalization." Ning Jianqiang said, "By now, the smart home market has still maintained a high degree of prosperity, and it is very necessary for the development of Well-tech to timely introduce Yi+ smart manufacturing platform."

Using the YIMES manufacturing execution system, Well-tech has achieved the monitoring and early warning of process parameters, the 100% system management of order progress, and the increase of equipment utilization rate to a certain extent. By means of informatization, the circulation of paper sheets can be avoided. All data are online in real time, so that all equipment and auxiliaries can be controlled in a centralized manner to reduce downtime, mold change time and human input.

The system administrators can clearly check the information such as real-time order status, testing status, production progress and pass rate using mobile phones or computers. In this regard, Ning Jianqiang said, "With specialized on-site design and equipment debugging, the YIZUMI team has given us a lot of help. Using the YIMES system, the company has enhanced the lean production capacity of the factory, thus boosting the lean production."

DFMA SERVICES Facilitate the Launching and Production of New Products

In recent years, the innovation plus intelligence has become the next development trend. Well-tech has made great efforts for transformation and upgrading. Relying on the DFMA (product design for manufacturing and assembly) as the core competitiveness, Well-tech has established the strategic development direction of intelligent home appliances and automotive precision parts.

"The DFMA service is to promote the redesign of the customers' products by manufacturability analysis, so as to achieve the industrialized production of high quality, low cost and high efficiency. It can help the start-ups avoid risks in core links such as design and development, cost control, etc."

In order to effectively reduce the product development cycle and modification frequency, Well-tech has set up a strong engineering team to participate in customer product design, which can make detailed technical analysis on the customers' product drawings and give professional solutions for DFM/DFA optimization to facilitate the launching and production of new products.

Ning Jianqiang stressed, "With rich experience in the industrialization of intelligent hardware products, I believe Well-

tech can attract more innovative intelligent enterprises. The company will also seize the opportunity of fast-rising national brand driven by the tide of innovation and entrepreneurship in China, and strive to become a model manufacturing enterprise for industrialization of intelligent hardware products, thus making greater contributions to the revitalization and development of national brands."

YIMES

YIZUMI High-Speed Packaging System Helping Overseas Customers to Produce Plastic Containers



As the first touch by consumers, plastic container plays an important part in the food and medicine packaging industry. Plastic containers are widely used in packaging, with high sealing performance and stable quality.

Nowadays, plastic containers have widely been used in food, medicine and other

consideration of market conditions, it adopts new processes and technologies to improve production efficiency, raise product quality, and satisfy the current market requirements for thin-wall plastic packaging.

Also, according to INJECTPLAST SA's production requirements, YIZUMI customized

The person in charge of INJECTPLAST SA said, "We are delighted to see that the PAC350K has been running smoothly and stably, ensuring the order quality and delivery."

Although it is only a small-sized plastic container with slim profit margins, INJECTPLAST SA believes that even a small market can grow bigger and stronger if capturing demands. In the future, INJECTPLAST SA will take good advantage of demand growth, consumption upgrading, and the opportunities brought by technological and industrial changes, promoting plastic containers to the middle and high-end market.



industry sectors. More and more investors have joined this seemingly inconspicuous industry to meet the growing demand in market.

INJECTPLAST SA, an Ecuador-based company founded in 2019, has been engaged in the production of plastic packaging containers. After more than two years of exploration, it has gradually developed mature product and production and achieved great success, becoming a company with an annual output of over one million pieces.

INTEGRATED SOLUTIONS Creating high-quality products for customers

INJECTPLAST SA reacts quickly to the rapidly changing and diversified market. With full

an integrated solution, including PAC350K high-speed packaging machine, four cavity needle valve mold, IML (In-mold labeling) system, and auxiliary equipment.

The PAC350K high-speed injection molding machine is equipped with an efficient and energy-saving system, which doubles the production capacity, sharply decreases energy consumption, and creates better economic benefits for customers. At the same time, according to product features and in-mold labeling process requirements, YIZUMI specific PAC350K high speed injection molding machine with four cavity needle valve mold can reduce production procedures, shorten the production cycle, and increase production efficiency.

"Efficiency is the most powerful weapon for the enterprise in a fast-growing industry, and a slow pace might lost market opportunities."



TURNKEY PROJECT Providing all-around services for customers

INJECTPLAST SA is the first Ecuadorian company who set up a whole production line of YIZUMI thin-wall packaging injection molding systems. It has purchased 5 sets of turnkey production lines including injection molding machines, molds, labeling robots, auxiliaries and other peripherals.

The turnkey solution enables customers to go into production smoothly and quickly, creating greatest economic benefits and effectively reducing technical risks. But for the supplier, equipment integration is not easy, involving product design, mold manufacturing, equipment debugging, and the whole line trial operation. Each process must be carefully verified to avoid low-level problems.

At the beginning, YIZUMI's high-speed packaging technical team immediately started new design of injection molding process upon receipt of plastic blister packing samples from INJECTPLAST SA. Not only considering design details, but also local warehousing, transportation and sales

strategy, YIZUMI finally recommended the most mature models, PAC350K thin-wall injection molding machine equipped with four cavity needle valve mold, eliminating the customer's worries of stability.

INJECTPLAST SA aims to combine high-quality products with high production efficiency. Therefore, YIZUMI has specifically upgraded the power system of the machine to increase the injection speed by 30%; newly added a servo system on the mold opening and closing system to improve the operation precision by more than 50%, and to make label placement more accurate. The qualified rate of finished product can exceed 99.8%.

It has been verified by customers that YIZUMI high-speed packaging system is very stable. In the future, YIZUMI will continuously explore and develop new technologies and products, to broaden the application field and create more value for customers.



Dongxu: Committed to Pursuing Top Quality



Zhejiang Dongxu Material technology Co. Ltd (hereinafter referred to as "Company") , established in November 2016, is located at No. 777 Long' an Road, Qin'an Administrative Village, Caoqiao Community, Pinghu Town, Jiaxing City, Zhejiang Province, the Company occupies an area of 7133 square meters .with a building area of 5020 square meters. The total investment exceeds 48 million yuan. The annual output has reached 1300 tons. The Company is a high-tech enterprise specializing in the production of automotive plastic parts, serving. Their main customers are the automotive OEMs and related suppliers of SAIC Motor.

To make the product laminating process smoother and to reduce manual work, the concept of fully automatic laminating by robot is adopted. By taking advantage of the robotic tracking compensation feature, it reduces the errors caused by the mechanical structure. It also integrates the fully automatic production into peeling, attaching, and pressing processes, greatly improving the production efficiency while reducing the labor cost.

Challenge 1 +

Wheel brow products are irregular curved trims with arc-shaped adhesive tapes,

creating a great challenge to the attaching accuracy.

For this type of products, YIZUMI has designed a special profiling mechanism for wheel brow to prevent the product from displacement during the attaching process. YIZUMI has also employed the robotic tracking compensation feature to improve the operating accuracy and ensure the product quality.



Challenge 2 +

Wheel brow adhesive tapes have to go through the peeling, attaching, and pressing processes. A product most likely requires two different sizes of adhesive tapes, which is a rather complex process.

After repeatedly simulating the 3D drawing of the customer's product with YIZUMI's preliminary robot palm design, the engineers abandoned the conventional approach and integrated two adhesive tape dispensers on one robot palm to solve this problem, allowing the robot to automatically switch adhesive tape applicators according to the process requirement. The actions of peeling, attaching, and pressing are very complicated processes during application. The design of the adhesive tape applicator has gone through repetitive testing and modifications. The solution is ingeniously designed to integrate the functions of peeling, attaching, and pressing with a compact footprint. The dispenser can be easily changed manually by using a quick release clamp.

Challenge 3 +

The customer has different types of products. One machine has to fulfill the production of multiple products. How to achieve a quick change of tooling also creates a great challenge.



The size difference between their biggest and smallest products is very large. A set of tooling weighs at least a few dozen kilograms, making it difficult for manual handling. Based on the product simulation, we designed an independent trolley to handle the tooling. When the machine is ready to switch products, the customer only needs to manually push the handling trolley to the designated position and remove the installation screws for replacement. Each set of products has a common positioning device to ensure the accuracy of each installation.

YIZUMI Robot is committed to creating a better return on investment and user experience for our customers worldwide. We will continuously explore and innovate based on user needs and strive to provide the best cost-effective solutions. At present, in addition to the traditional die-casting and injection molding fields, the application of YIZUMI robots is now becoming more and more extensive in segment market such as adhesive coating and visual products.



YIZUMI Around the World

2022 Injection Molding Machines & Rubber Injection Molding Machines Exhibitions Review



Venue: Centro Citibanamex, Ciudad de México
Date: 8th-11th, March
Exhibited IMMs: UN120A5, UN260A5, UN480A5
Yizumi Booth : Stand No. #2730



Venue: EUREXPO exhibition center, Lyon, France
Date: 5th-8th, April
Exhibited IMMs: FF160
Yizumi Booth : N09-006



Venue: Pordenone Exhibition Center
Date: March 31st - April 2nd
Exhibited IMMs: FF120, FF200, UN120A5-EU
Yizumi Booth : Hall 1, Stand 11



Venue: Expoville Pavilions - Joinville SC - Brazil
Date: 5th-8th April
Exhibited IMMs: UN700D1, FF200, PAC350, UN260A5-UPVC
Yizumi Booth : Hall 3, Stand 502



Venue: A2 Forum | Rheda-Wiedenbrück
Date: 10th-12th May
Exhibited IMMs: FF90
Yizumi Booth : Halle 5 / M1



Venue: CIC Alger, Algiers
Date: 16th-18th May
Exhibited IMMs: PAC250K
Yizumi Booth : 2C.21 HALL 2



Venue: Huntington Place (formerly the TCF Center)
1 Washington Blvd, Detroit, MI 48226, United States
Date: 25th-26th May
Exhibited IMMs: FF135-N
Yizumi Booth : 601



Venue: TARGI KIELCE SA Zakladowa 1,
25-672 Kielce, Poland
Date: 24th-27th May
Exhibited IMMs: FF200, UN260A5
Yizumi Booth : G-9 (Hall G)



Venue: Bhrikuti Mandap, Kathmandu, Nepal
Date: 26th-28th May
Yizumi Booth : 2A



Venue: Chennai Trade Centre, Nandambakkam,
Chennai
Date: 10th-13th June
Exhibited IMM: FF120
Yizumi Booth : B231& 232(HALL 2)



Venue: Villa Ciudad Ferial
Date: 24th-27th August



Venue: International Business and Exhibition
Center of Bogotá
Date: 26th-30th September



Venue: Jakarta International Expo Kemayoran
Date: 16th-19th November



Venue: Cumhuriyet Mah Eski Cumhuriyet,
Hadımköy Yolu Cd No:9 D:1, 34500
Büyükkçekmece/İstanbul
Date: 23th-26th November



Venue: China
Date: The end of November



Welcome to subscribe!

Founded in 2009, Craft has been well received by our customers. As a magazine to communicate the core values of Yizumi, Craft focuses on the trend and development of the molding industry and aims to provide valuable information for our customers.



YIZUMI_Official

YIZUMI_Official

*The info above please refer to the actual situation as final.